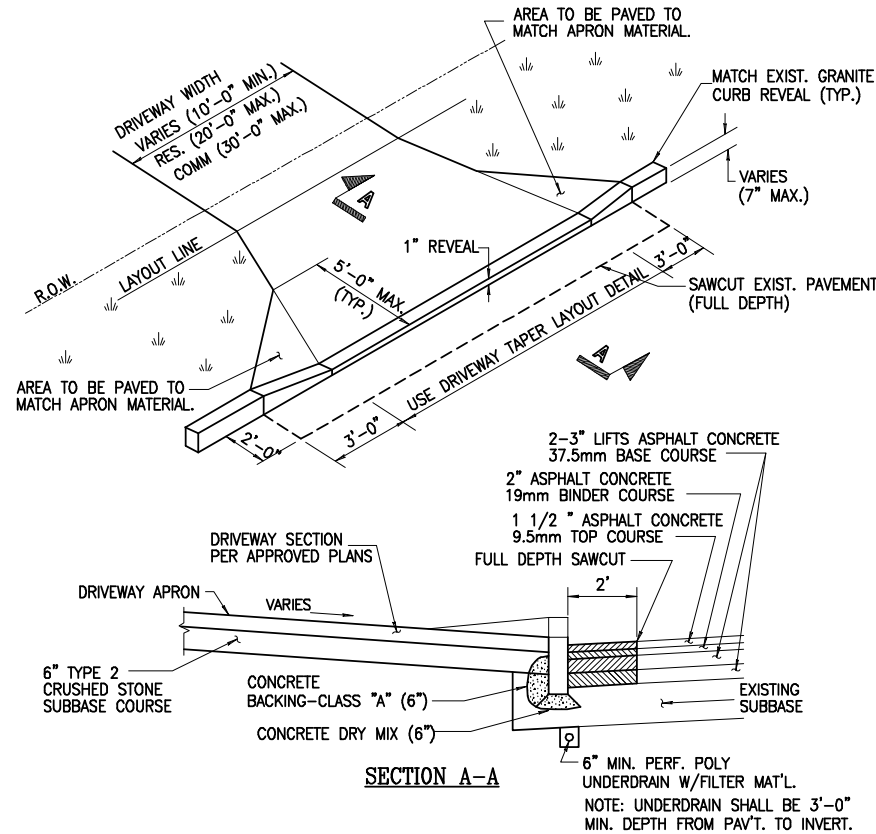


- NOTES:
1. USE CURB CUTTING SAW TO SAWCUT EXISTING CURB TO NEW DRIVEWAY DIMENSIONS.
 2. IF CURB REPLACEMENT ALLOWED, EXISTING PAVEMENT SHALL BE SAWCUT PRIOR TO CURB REPLACEMENT. ALL PAVEMENT JOINTS SHALL BE TACK COATED AND SEALED WITH BITUMINOUS SEALER.
 3. TOPSOIL AND SEED ALL DISTURBED AREAS.
 4. IT IS REQUIRED THAT DRIVEWAYS TO COUNTY ROADS BE PAVED TO THE RIGHT-OF-WAY LINE. THE DRIVEWAY SHALL SLOPE AWAY FROM THE OUTSIDE EDGE OF THE SHOULDER AT A MINIMUM OF 1/2 INCH PER FOOT TO THE CENTERLINE OF DRAINAGE.
 5. REPLACE PAVEMENT IN KIND WITH WHAT IS EXISTING, UNLESS CONDITIONS EXIST WHERE THAT ISN'T FEASIBLE, THEN INSTALL SECTION AS APPROVED BY THE DEPARTMENT'S ENGINEER OR HIGHWAY MAINTENANCE MANAGER. THE MINIMUM SECTION APPROVED SHALL BE 6 INCHES OF TYPE 2 SUBBASE (CRUSHER RUN STONE), 2" OF ASPHALT CONCRETE BINDER AND 1-1/2" OF ASPHALT CONCRETE TOP.
 6. REFER TO CONCRETE APRON OR DRIVEWAY SECTION DETAIL FOR CONCRETE DRIVEWAYS.

DRIVEWAY APRON WITH CONCRETE CURB

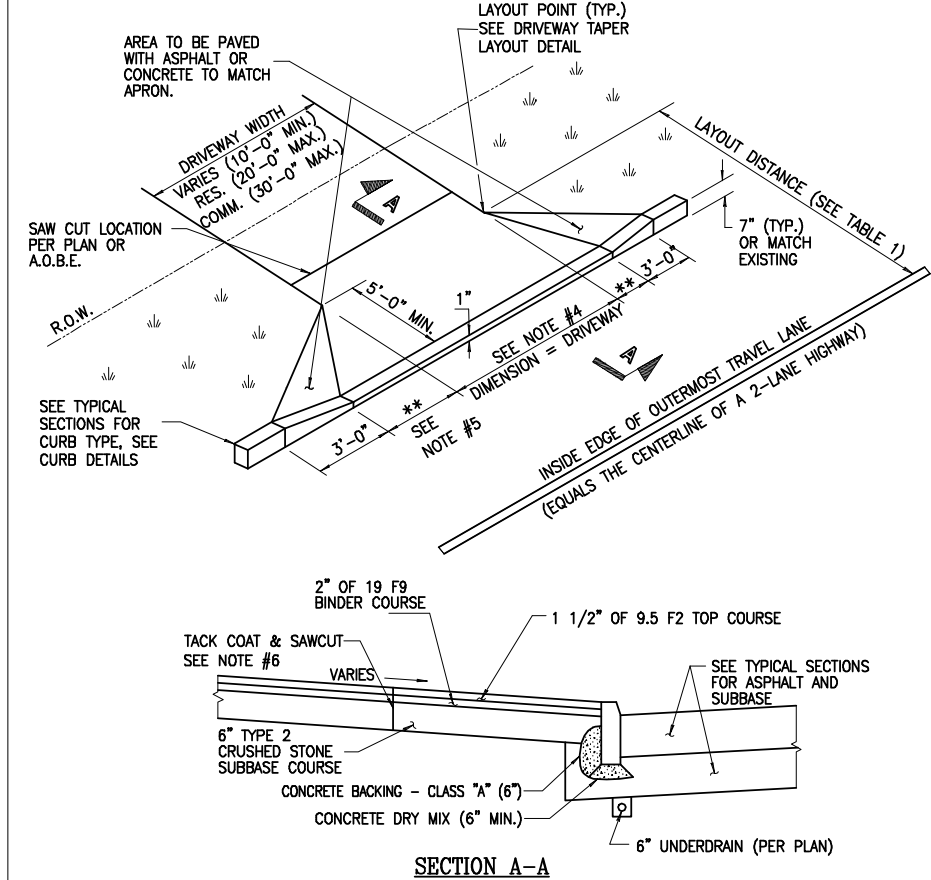
NOT TO SCALE - REVISED: 06/12/23



- NOTES:
1. USE CURB CUTTING SAW TO SAWCUT EXISTING CURB TO NEW DRIVEWAY DIMENSIONS.
 2. IF CURB REPLACEMENT ALLOWED, EXISTING PAVEMENT SHALL BE SAWCUT PRIOR TO CURB REPLACEMENT. ALL PAVEMENT JOINTS SHALL BE TACK COATED AND SEALED WITH BITUMINOUS SEALER.
 3. TOPSOIL AND SEED ALL DISTURBED AREAS.
 4. IT IS REQUIRED THAT DRIVEWAYS TO COUNTY ROADS BE PAVED TO THE RIGHT-OF-WAY LINE. THE DRIVEWAY SHALL SLOPE AWAY FROM THE OUTSIDE EDGE OF THE SHOULDER AT A MINIMUM OF 1/2 INCH PER FOOT TO THE CENTERLINE OF DRAINAGE.
 5. REPLACE PAVEMENT IN KIND WITH WHAT IS EXISTING, UNLESS CONDITIONS EXIST WHERE THAT ISN'T FEASIBLE, THEN INSTALL SECTION AS APPROVED BY THE DEPARTMENT'S ENGINEER OR HIGHWAY MAINTENANCE MANAGER. THE MINIMUM SECTION APPROVED SHALL BE 6 INCHES OF TYPE 2 SUBBASE (CRUSHER RUN STONE), 2" OF ASPHALT CONCRETE BINDER AND 1-1/2" OF ASPHALT CONCRETE TOP.
 6. REFER TO CONCRETE APRON OR DRIVEWAY SECTION DETAIL FOR CONCRETE DRIVEWAYS.

DRIVEWAY APRON WITH GRANITE CURB

NOT TO SCALE - REVISED: 06/12/23



- NOTES:
1. TOPSOIL AND SEED ALL DISTURBED AREAS WITH TOPSOIL.
 2. EXPANSION JOINT MATERIAL TO BE PLACED A.O.B.E.
 3. WIDTH OF DRIVEWAY APRONS AT THE LAYOUT POINT SHALL MATCH EXISTING WIDTH.
 4. SEE DRIVEWAY RESTORATION TABLE FOR DROP CURB LENGTH.
 5. TO BE DETERMINED BY TAPER METHOD OF LAYOUT.
 6. COST FOR SAWCUTTING DRIVEWAY AND TACK COAT SHALL BE INCLUDED IN THE PRICE BID FOR ITEM 608.020102.
 7. CURB SECTION SHOWN. GUTTER SECTION SIMILAR. HIGHWAY EDGE OF PAVEMENT (CURB FACE) EQUALS BACK EDGE OF PROPOSED GUTTER. TIP-UP SECTION IS APPLICABLE ONLY WITH CURBING.

DRIVEWAY APRON WITH GRANITE CURB INSTALLATION

NOT TO SCALE - REVISED: 01/04/24

NO.	DATE	BY:

CONSULTANT
 Consultant Address: (585) 867-5309
 Rochester, New York XXXX
 Fax: (585) 867-5309

PROJECT MANAGER: **MANAGER**
 DRAWN BY: **DRAFTER**

DEPARTMENT OF TRANSPORTATION
 50 WEST MAIN STREET, SUITE 6100
 ROCHESTER, NEW YORK 14614-1231
 UNAUTHORIZED ALTERATION OR ADDITION TO THIS DRAWING
 VIOLATES NEW YORK STATE EDUCATION LAW
 ARTICLE 145, SECTION 2209

COUNTY ROAD #
PROJECT NAME
PROJECT LIMITS
TOWN
CAPITAL PROJECT NO. XXXX-XX

SCALE: NOT TO SCALE
DATE ISSUED: DATE
DRAWING NO. 1 OF 22